

McMillan Ave.

Traffic flipped to the west side lanes for work between Necessary Ln. and Pipefitter.

Entrance to Kilo St. will be closed off. Traffic to detour onto Supply St.

New traffic alignment on N. Hobson Ave.

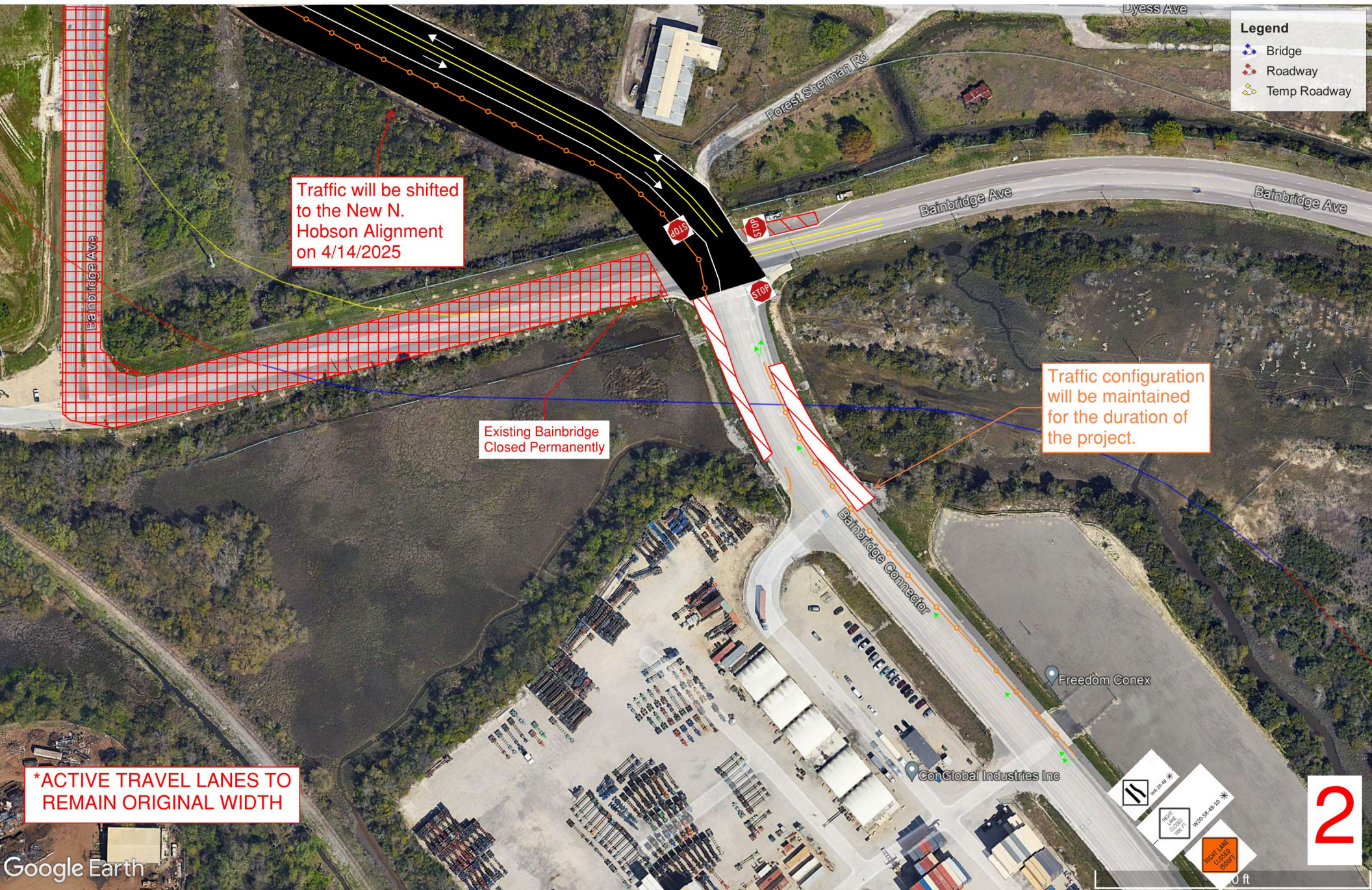
Detour Route

The outside lanes on Bainbridge Connector closed off for the remainder of the project duration. (Page 2)

All driveways along N. Hobson to remain open during construction

Bainbridge Connector

Stromboli Ave.



Legend

- Bridge
- Roadway
- Temp Roadway

Traffic will be shifted to the New N. Hobson Alignment on 4/14/2025

Existing Bainbridge Closed Permanently

Traffic configuration will be maintained for the duration of the project.

*ACTIVE TRAVEL LANES TO REMAIN ORIGINAL WIDTH

2

